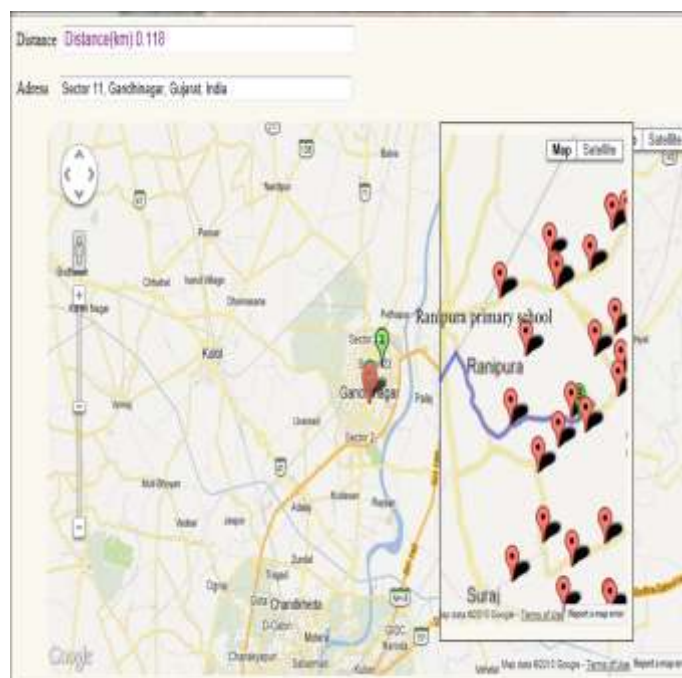


GIS School mapping-ensuring access to Elementary Education

Gujarat Council of Elementary Education, Department of Education,
Government of Gujarat

GIS School Mapping as an initiative by Sarva Shiksha Abhiyan (SSA) Gujarat aims at identifying the un-served areas in terms of Elementary Education through scientific process of School Mapping using Geo-Informatics System. This system integrates Geo-Spatial Database with Departmental School Data. It has more than 40,943 school locations, Cluster Resource Center (CRC), Block Resource Center (BRC), and Cluster Boundary in GIS environment.



The initiative covers all 26 districts of the State of Gujarat for school wise mapping, as per distances mentioned in Gujarat Right to Education (RTE), Act. This system can also be implemented in any other state of India as well as at the country to cover entire population of the country.

The project uses GIS mapping, through Google Earth, to identify ideal locations of schools (primary school within 1 km, and upper-primary school within 3 kms of every residential location) across all districts. The project also maps the locations of existing 40,000 odd schools. Further, around 29 new schools have been identified to be built as per planned distances according to GIS with the technical support from Bhaskaracharya Institute of Space Application and Geo-Infomatics(BISAG).

The scheme operates successfully with a trained team at State, District and Block Level. BISAG provides specialized services and solutions in implementing map-based Geospatial Information Systems. BISAG undertakes all services for the entire process of implementing an enterprise level GIS system. These services include GIS database design and development, map creation, updation and finishing, data migration/conversion and format translation, software development and customization, systems integration and technical consulting. Thus, the interoperability of state government's two major modules makes the program effective. It has a high security based software for research and data collection. Independent audit has been conducted on 5% of the sample data.

As a result of this project, customized criteria based analysis can also be done by users using database with Departmental school data i.e District Information System for Education (DISE) and the GIS based school mapping. Further, infrastructure gap in each GIS mapped school can be checked for compliance to (RTE) norms.

This initiative was conferred Silver Award in the category of “Innovative use of GIS Technology in e-Governance” in the National e-Governance Awards, 2013-14